



## ROVER METALS ANNOUNCES INFILL AND DELINEATION OF THE NEW ANDREW ZONE AT CABIN GOLD, NT, CANADA

Vancouver, British Columbia – (January 13, 2022) – Rover Metals Corp. (TSXV: ROVR) (OTCQB: ROVMF) (FRA:4X0) (“Rover” or the “Company”) is pleased to report on the Phase 2 Exploration Program at its 100% owned [Cabin Gold Project, NT, Canada](#). The focus of the Phase 2 Exploration Program was to discover and delineate new gold mineralized zones along the Bugow Iron Formation, the controlling structure for gold at the Cabin Gold Project. The Company is pleased to announce that its exploration program has been able to confirm and expand the historic gold grades at the Andrew South, Andrew Middle, and Andrew North Targets. The expansion includes an increase to the historical average gold grades reported across all of these historic targets. Rover has grouped the north, middle and south bounds of Andrew into a new single Andrew Zone, which extends 800 meters from south to north at surface. The [map of the Bugow Iron Formation](#) on the Company’s website has been updated to show the location of the new Andrew Zone. The south end of the Andrew Zone is situated roughly 500 meters northeast of the Beaver Zone. The Beaver Zone was featured in the Company’s [December 7, 2021](#), release. **The Company has now reported on the discovery of three medium-to-high grade mineralized gold zones at Cabin: the Arrow, Beaver, and Andrew Zones, all open at depth, and along strike.**

### Andrew Zone Expansion

#### *Andrew South*

The Company is reporting multiple near-surface medium-to-high grade gold at the newly defined Andrew Zone which extends 800 meters from south to north along the Bugow Iron Formation. Highlights of Phase 2 drilling at Andrew South include: new drill hole **CL-21-21** which reported **2.9m of 5.09 g/t Au** (from 70.65m to 76.8m), including **2.2m of 6.42 g/t Au** and deeper in hole **CL-21-21**, reporting **4.7m of 3.38 g/t Au** (from 88.80m to 94.00m). As of the date of this release, the Company has sent in additional samples for assaying from hole CL-21-21, as the gold mineralization is recognized to extend past the sulfide intervals of the drill core, which is a first for the project. The new assays, once received, will be part of a future updating release, and could extend the reported high-grade gold intervals at the southern part of Andrew. Additional highlights at Andrew include: new hole **CL-21-24** which reported **3.9m of 2.91 g/t Au** (from 51.00m to 55.12m); new hole **CL-21-19** which reported **3.1m of 2.57 g/t Au** (from 62.2m to 65.3m) and deeper in hole **CL-21-19** reporting **1m of 2.06 g/t Au** (from 93.3m to 94.3m); new hole **CL-21-20** which reported **0.4m of 6.11 g/t Au** (from 90.8m to 91.2m); and new hole **CL-21-25** which reported **2.3m of 2.61 g/t Au** (from 68.0m to 70.5m). As noted below, in the drill result tables, there are multiple well mineralized drill intercepts at the south part of the Andrew Zone that are reported in additional new holes (see CL-21-22, CL-21-22, CL-21-23 in the tables below). As of the date of this release, the Company has also sent additional samples from hole CL-21-25 to the lab for assaying.

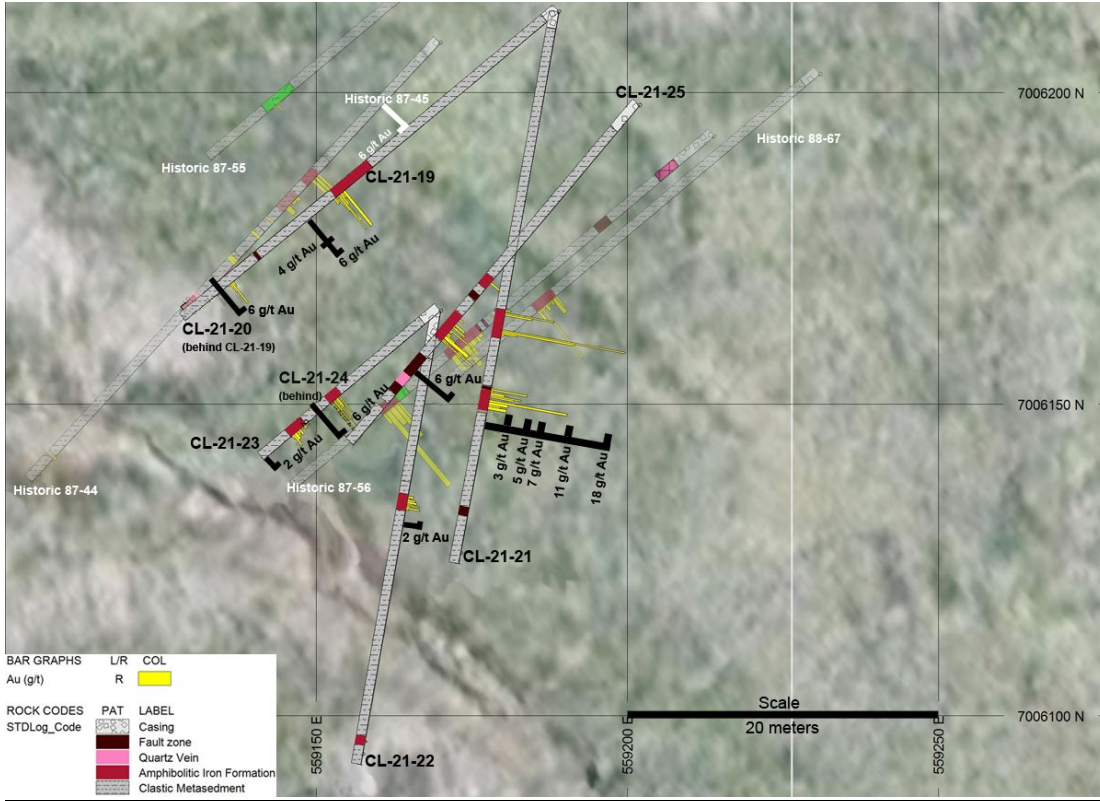
#### *Andrew North*

Highlights from drilling at the northern part of the Andrew Zone include new hole **CL-21-27** which reported **4.3m of 4.14 g/t Au** (from 17.8m to 22.8m); new hole **CL-21-29** which reported **3.0m of 3.2 g/t Au** (from 37.6m to 40.8m) and multiple additional medium-to-high grade gold intercepts at deeper depth from this same hole, as reported in the drill result tables below. As of the date of this release, the Company has sent additional samples to the lab from hole CL-21-29. Additional highlights include new hole **CL-21-28** which reported **3.2m of 1.19 g/t Au** (from 38.8m to 42.8m).

The results, both confirm and expand upon, 1980s historical drilling at Andrew, **and have returned higher grades than historical results**. The historical drill holes and new holes from Andrew South and Andrew North can be referenced in the drill plan views below. A table of significant Andrew Zone drill assay results, greater than 0.5 g/t Au, listed by hole and interval, can be found near the end of this release. For purposes of the calculations of the highlighted intervals in this release, Rover considers results above 0.50 g/t Au to be of significance.

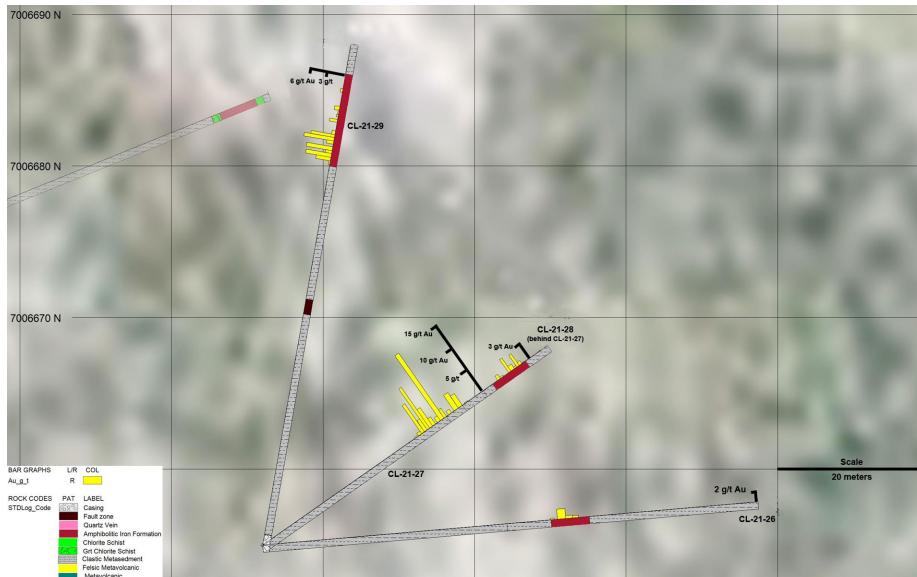


### Drill Plan View – Andrew Zone (South)



- [CL-21-19/20 Cross Sections](#)
- [CL-21-21/22 Cross Sections](#)
- [CL-21-23/24/25 Cross Sections](#)

### Drill Plan View – Andrew Zone (North)





[CL-21-26 Cross Section](#)

[CL-21-27/28 Cross Sections](#)

[CL-21-29 Cross Section](#)

The Company’s working hypothesis is that the near surface Andrew Zone extends 800 meters, from south to north. There was significant drilling along the middle of the Andrew Zone in the 1940s. Unfortunately, none of the historical drill records have survived. The Company tested its hypothesis during its Phase 2 Exploration Program, by drilling two drill holes in the centre of the Andrew Zone. As of the date of this release, the Company has sent additional samples from both hole CL-21-30 and CL-21-31 to the lab for assaying as the gold mineralization is recognized to extend past the sulphide intervals in the drill core. The results from Andrew middle will form part of an updating release.

*Judson Culter, CEO at Rover Metals, states “We are very pleased to have made the discovery of a third significant zone at the Cabin Gold project. In total, there is over 1,000 meters of surface strike length, that is open along strike (Beaver) and at depth (Arrow, Beaver and Andrew), across all defined zones on the project (Arrow, Beaver and Andrew). We expect the 2022 Phase 3 Exploration Program at the Cabin Gold project to focus on the highest grade gold areas of these zones.”*

**Tables of Significant Drill Results**

<u>Hole</u>	<u>Easting</u>	<u>Northing</u>	<u>Elev</u>	<u>Total Depth</u>	<u>Dip</u>	<u>Azimuth</u>	<u>Zone</u>
CL-21-19	559,189.00	7,006,213.00	181.7	100	-45	230	Andrew South
CL-21-20	559,189.00	7,006,213.00	181.7	152	-60	230	Andrew South
CL-21-21	559,189.00	7,006,213.00	181.7	130	-45	190	Andrew South
CL-21-22	559,170.00	7,006,165.00	181.7	104	-45	190	Andrew South
CL-21-23	559,170.00	7,006,165.00	181.7	53	-45	230	Andrew South
CL-21-24	559,170.00	7,006,165.00	181.7	59	-65	230	Andrew South
CL-21-25	559,202.00	7,006,198.00	181.5	101	-45	220	Andrew South
CL-21-26	558,606.00	7,006,655.00	188.8	47	-45	85	Andrew North
CL-21-29	558,606.00	7,006,655.00	188.8	50	-50	10	Andrew North
CL-21-27	558,606.00	7,006,655.00	188.8	34	-45	55	Andrew North
CL-21-28	558,606.00	7,006,655.00	188.8	47	-60	55	Andrew North
CL-21-30	558,999.00	7,006,228.00	185.5	47	-45	220	Andrew Middle
CL-21-31	558,999.00	7,006,228.00	185.5	26	-45	260	Andrew Middle

<u>Hole</u>	<u>Sample ID</u>	<u>From</u>	<u>To</u>	<u>Interval</u>	<u>Au g/t</u>	<u>Zone</u>
CL-21-19	V748041	62.20	62.76	0.56	6.24	Andrew South
CL-21-19	V748042	62.76	63.00	0.24	1.1	Andrew South
CL-21-19	V748043	63.00	63.29	0.29	0.88	Andrew South
CL-21-19	V748044	63.29	63.59	0.3	1.96	Andrew South
CL-21-19	V748045	63.59	64.00	0.41	4.19	Andrew South
CL-21-19	V748046	64.00	64.35	0.35	2.73	Andrew South
CL-21-19	V748047	64.35	64.68	0.33	0.37	Andrew South
CL-21-19	V748048	64.68	64.98	0.3	0.94	Andrew South
CL-21-19	V748049	64.98	65.32	0.34	1.02	Andrew South
CL-21-19	V748058	93.32	93.64	0.32	0.71	Andrew South



CL-21-19	V748059	93.64	94.00	0.36	3.67	Andrew South
CL-21-19	V748060	94.00	94.3	0.30	1.56	Andrew South

<u>Hole</u>	<u>Sample ID</u>	<u>From</u>	<u>To</u>	<u>Interval</u>	<u>Au g/t</u>	<u>Zone</u>
CL-21-20	V748067	90.86	91.26	0.4	6.11	Andrew South

<u>Hole</u>	<u>Sample ID</u>	<u>From</u>	<u>To</u>	<u>Interval</u>	<u>Au g/t</u>	<u>Zone</u>
CL-21-21	V748071	70.65	70.98	0.33	0.76	Andrew South
CL-21-21	V748072	70.98	71.3	0.32	0.35	Andrew South
CL-21-21	V748073	71.3	71.61	0.31	6.98	Andrew South
CL-21-21	V748074	71.61	72.03	0.42	3.89	Andrew South
CL-21-21	V748075	75.31	75.61	0.30	17.6	Andrew South
CL-21-21	V748076	75.61	76.00	0.39	10.4	Andrew South
CL-21-21	V748077	76.00	76.42	0.42	2.23	Andrew South
CL-21-21	V748078	76.42	76.8	0.38	0.48	Andrew South
CL-21-21	V748087	92.23	92.93	0.70	2.78	Andrew South
CL-21-21	V748088	92.93	93.33	0.40	1.77	Andrew South
CL-21-21	V748089	93.33	94.00	0.67	2.67	Andrew South

<u>Hole</u>	<u>Sample ID</u>	<u>From</u>	<u>To</u>	<u>Interval</u>	<u>Au g/t</u>	<u>Zone</u>
CL-21-22	V748090	42.4	42.88	0.48	0.84	Andrew South
CL-21-22	V748091	42.88	43.18	0.3	0.39	Andrew South
CL-21-22	V748092	43.18	43.61	0.43	1.16	Andrew South
CL-21-22	V748093	43.61	44.10	0.49	1.43	Andrew South
CL-21-22	V748094	44.10	44.40	0.30	0.95	Andrew South
CL-21-22	V748095	44.40	44.67	0.27	1.8	Andrew South
CL-21-22	V748096	44.67	45.01	0.34	0.57	Andrew South
CL-21-22	V748097	45.01	45.36	0.35	1.94	Andrew South
CL-21-22	V748098	45.36	45.71	0.35	0.43	Andrew South

<u>Hole</u>	<u>Sample ID</u>	<u>From</u>	<u>To</u>	<u>Interval</u>	<u>Au g/t</u>	<u>Zone</u>
CL-21-23	V748117	41.98	42.44	0.46	0.89	Andrew South
CL-21-23	V748118	42.44	42.75	0.31	0.52	Andrew South
CL-21-23	V748119	42.75	43.15	0.40	0.80	Andrew South
CL-21-23	V748120	43.15	43.90	0.75	1.05	Andrew South
CL-21-23	V748121	43.90	44.30	0.40	1.88	Andrew South
CL-21-23	V748123	44.30	44.62	0.32	0.52	Andrew South

<u>Hole</u>	<u>Sample ID</u>	<u>From</u>	<u>To</u>	<u>Interval</u>	<u>Au g/t</u>	<u>Zone</u>
CL-21-24	V748102	51.00	51.50	0.50	2.77	Andrew South
CL-21-24	V748103	51.50	52.01	0.51	0.15	Andrew South
CL-21-24	V748104	52.01	52.76	0.75	1.57	Andrew South



CL-21-24	V748105	52.76	53.10	0.34	3.63	Andrew South
CL-21-24	V748106	53.10	53.41	0.31	5.16	Andrew South
CL-21-24	V748107	53.41	53.80	0.39	1.79	Andrew South
CL-21-24	V748108	53.80	54.20	0.40	3.57	Andrew South
CL-21-24	V748109	54.45	54.77	0.32	6.11	Andrew South
CL-21-24	V748110	54.77	55.12	0.35	4.93	Andrew South

<u>Hole</u>	<u>Sample ID</u>	<u>From</u>	<u>To</u>	<u>Interval</u>	<u>Au g/t</u>	<u>Zone</u>
CL-21-25	V748125	53.00	53.45	0.45	1.64	Andrew South
CL-21-25	V748126	63.95	64.25	0.30	0.73	Andrew South
CL-21-25	V748127	65.42	65.88	0.46	1.72	Andrew South
CL-21-25	V748128	65.88	66.18	0.30	0.22	Andrew South
CL-21-25	V748129	66.18	66.58	0.40	2.16	Andrew South
CL-21-25	V748130	67.09	67.39	0.30	4.01	Andrew South
CL-21-25	V748131	67.39	67.76	0.37	0.41	Andrew South
CL-21-25	V748132	68	68.35	0.35	0.50	Andrew South
CL-21-25	V748133	68.35	68.68	0.33	0.64	Andrew South
CL-21-25	V748134	68.68	68.98	0.30	1.59	Andrew South
CL-21-25	V748135	68.98	69.68	0.70	4.27	Andrew South
CL-21-25	V748136	69.82	70.12	0.30	1.07	Andrew South
CL-21-25	V748137	70.12	70.46	0.34	5.55	Andrew South

<u>Hole</u>	<u>Sample ID</u>	<u>From</u>	<u>To</u>	<u>Interval</u>	<u>Au g/t</u>	<u>Zone</u>
CL-21-26	V748185	28.0	28.8	0.80	1.85	Andrew North
CL-21-26	V748186	28.8	29.47	0.67	0.52	Andrew North

<u>Hole</u>	<u>Sample ID</u>	<u>From</u>	<u>To</u>	<u>Interval</u>	<u>Au g/t</u>	<u>Zone</u>
CL-21-27	V748139	17.83	18.20	0.37	0.57	Andrew North
CL-21-27	V748140	18.2	18.52	0.32	6.32	Andrew North
CL-21-27	V748141	18.52	18.83	0.31	2.44	Andrew North
CL-21-27	V748142	18.83	19.11	0.28	9.2	Andrew North
CL-21-27	V748143	19.11	19.47	0.36	4.1	Andrew North
CL-21-27	V748144	19.47	19.79	0.32	1.64	Andrew North
CL-21-27	V748145	20.00	20.33	0.33	1.06	Andrew North
CL-21-27	V748146	20.33	20.75	0.42	14.65	Andrew North
CL-21-27	V748147	20.75	21.03	0.28	1.81	Andrew North
CL-21-27	V748148	21.25	21.61	0.36	0.78	Andrew North
CL-21-27	V748149	21.92	22.40	0.48	3.48	Andrew North
CL-21-27	V748150	22.40	22.84	0.44	2.64	Andrew North

<u>Hole</u>	<u>Sample ID</u>	<u>From</u>	<u>To</u>	<u>Interval</u>	<u>Au g/t</u>	<u>Zone</u>
CL-21-28	V748176	38.81	39.25	0.44	0.93	Andrew North
CL-21-28	V748177	39.25	39.82	0.57	0.27	Andrew North



CL-21-28	V748178	40.60	41.00	0.40	2.97	Andrew North
CL-21-28	V748179	41.00	41.59	0.59	1.05	Andrew North
CL-21-28	V748180	41.59	41.97	0.38	0.31	Andrew North
CL-21-28	V748181	41.97	42.36	0.39	2.63	Andrew North
CL-21-28	V748182	42.36	42.79	0.43	0.71	Andrew North

<u>Hole</u>	<u>Sample ID</u>	<u>From</u>	<u>To</u>	<u>Interval</u>	<u>Au g/t</u>	<u>Zone</u>
CL-21-29	V748153	37.60	38.00	0.40	2.72	Andrew North
CL-21-29	V748154	38.00	38.40	0.40	4.75	Andrew North
CL-21-29	V748155	38.4	38.70	0.30	1.18	Andrew North
CL-21-29	V748156	38.70	39.10	0.40	4.83	Andrew North
CL-21-29	V748158	39.37	39.71	0.34	1.31	Andrew North
CL-21-29	V748159	39.71	40.09	0.38	5.61	Andrew North
CL-21-29	V748160	40.09	40.39	0.30	4.43	Andrew North
CL-21-29	V748161	40.39	40.82	0.43	0.60	Andrew North
CL-21-29	V748162	41.70	42.01	0.31	1.48	Andrew North
CL-21-29	V748165	42.97	43.37	0.40	0.92	Andrew North

Technical information in this news release has been approved by David White, P.Geo., Technical Advisor of Rover and a Qualified Person for the purposes of National Instrument 43-101.

### **Stock Option Grant to Advisor**

The Company has made a stock option grant of 350,000 stock options to Robert Schafer, an advisor to the Company. The stock options have an exercise price of \$0.06, vest monthly over 12 months, and have a four-year useful life. Mr. Schafer has nearly 40 years of experience in the mineral industry, working in the international sector with both major and junior mining companies. He is founder and Managing Director of Eagle Mines Management, a globally active private natural resources corporation. He has held executive and senior management positions with Hunter Dickinson Inc., Kinross Gold Corp., and BHP Minerals over the past 20 years. Throughout his career Mr. Schafer has worked internationally, with notable experience in the far east of Russia, Southern Africa, South America and Australia.

### **About Rover Metals**

Rover is a precious metals exploration company specialized in North American precious metal resources, that is currently advancing the gold potential of its existing projects in the Northwest Territories of Canada (60<sup>th</sup> parallel). The Company commenced Phase 2 Exploration at its 100% owned Cabin Gold Project in the summer of 2021, and the analysis and reporting of the Phase 2 Exploration work at Cabin Gold continues through to the date of this release.



**You can follow Rover on its social media channels:**

Twitter: <https://twitter.com/rovermetals>

LinkedIn: <https://www.linkedin.com/company/rover-metals/>

Facebook: <https://www.facebook.com/RoverMetals/>

for daily company updates and industry news, and

YouTube: [https://www.youtube.com/channel/UCJsHsfag1GFyp4aLW5Ye-YQ?view\\_as=subscriber](https://www.youtube.com/channel/UCJsHsfag1GFyp4aLW5Ye-YQ?view_as=subscriber)

for corporate videos.

**Website:** <https://www.rovermetals.com/>

**ON BEHALF OF THE BOARD OF DIRECTORS**

*"Judson Culter"*

Chief Executive Officer and Director

For further information, please contact:

Email: [info@rovermetals.com](mailto:info@rovermetals.com)

Phone: +1 (778) 754-2617

**Statement Regarding Forward-Looking Information**

This news release contains statements that constitute "forward-looking statements." Such forward-looking statements involve known and unknown risks, uncertainties and other factors that may cause Rover's actual results, performance or achievements, or developments in the industry to differ materially from the anticipated results, performance or achievements expressed or implied by such forward-looking statements. Forward-looking statements are statements that are not historical facts and are generally, but not always, identified by the words "expects," "plans," "anticipates," "believes," "intends," "estimates," "projects," "potential" and similar expressions, or that events or conditions "will," "would," "may," "could" or "should" occur. There can be no assurance that such statements be prove to be accurate. Actual results and future events could differ materially from those anticipated in such statements, and readers are cautioned not to place undue reliance on these forward-looking statements. Any factor could cause actual results to differ materially from Rover's expectations. Rover undertakes no obligation to update these forward-looking statements in the event that management's beliefs, estimates or opinions, or other factors, should change.

**THE FORWARD-LOOKING INFORMATION CONTAINED IN THIS NEWS RELEASE REPRESENTS THE EXPECTATIONS OF THE COMPANY AS OF THE DATE OF THIS NEWS RELEASE AND, ACCORDINGLY, IS SUBJECT TO CHANGE AFTER SUCH DATE. READERS SHOULD NOT PLACE UNDUE IMPORTANCE ON FORWARD-LOOKING INFORMATION AND SHOULD NOT RELY UPON THIS INFORMATION AS OF ANY OTHER DATE. WHILE THE COMPANY MAY ELECT TO, IT DOES NOT UNDERTAKE TO UPDATE THIS INFORMATION AT ANY PARTICULAR TIME EXCEPT AS REQUIRED IN ACCORDANCE WITH APPLICABLE LAWS.**

***NEITHER THE TSX VENTURE EXCHANGE NOR ITS REGULATION PROVIDER (AS THAT TERM IS DEFINED IN THE POLICIES OF THE TSX VENTURE EXCHANGE) ACCEPTS RESPONSIBILITY FOR THE ADEQUACY OF THIS RELEASE.***