

Building the next Gold Mine in the NWT

Rover Metals Corp. (the "Company") is a private Canadian natural resource exploration company specialized in Canadian precious metal resources.

November 2017



THE CABIN LAKE PROJECT

The Cabin Lake target currently covers a small high grade gold resource. It is hosted in an iron formation and has room for drill expansion. The reported widths of mineralization are impressive.

- 110km northwest of Yellowknife, NWT
- The Cabin Lake Zone has a combined resource of **100,000 tons grading 0.3 oz/ton Au at Cabin Lake and 43,000 tonnes grading 4.46g/t at Bugow.** (* resource is non NI 43-101 compliant)



DIRECTORS, AND MANAGEMENT

Management Team with proven track record in successful exploration and advancing projects.

| | |
|--|-------------------------------------|
| Tookie Angus: Advisor | Nevsun Resources, K92 Mining |
| Lou Covello: Director | Aurora Geosciences |
| Keith Minty: President Director | Auryn Resources, Thani Dubai |
| Judson Culter: CEO Director | Dolly Varden Silver, Cannon Capital |
| Ron Woo: COO | Ledcor, Walter Energy |
| Raul Sanabria: VP Exploration | Tudor Gold, Red Eagle Exploration |

CURRENT FINANCING

\$4.9MM
IPO | RTO
Pre-Money
Market Cap

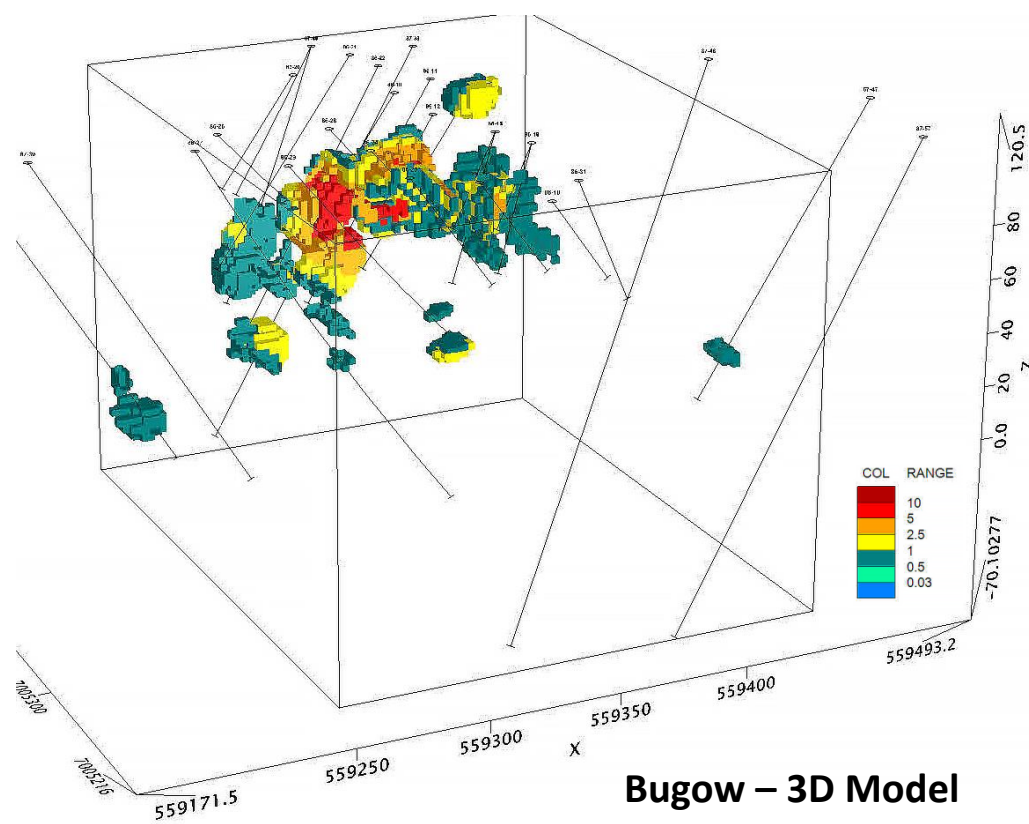
Up to CAD\$5MM at \$0.125 per Unit (full warrant) and/or \$0.14 per Flow-through Unit (full warrant)

SHARE STRUCTURE

| | |
|-----------------------|-------|
| Issued & Outstanding: | 31.0M |
| Warrants (\$0.20) | 8.8M |
| FDE | 39.8M |

CABIN LAKE HIGHLIGHTS

- Non NI-43-101 resource
 - 100,000 tons @ 0.30 oz/t
 - 43,000 tonnes @ 4.46 g/t
- 1 year time frame upgradable to inferred resource
- High upside potential -> open along strike and depth
- The Cabin Lake and Bugow area previous exploration by Andrew Yellowknife Mines Ltd., Freeport McMoran, Cominco, Highwood Resources, Aber Resources, North Arrow, and Aurora Geosciences
- Last reported work on the showings was in 1987 (Aber).



Bugow – 3D Model

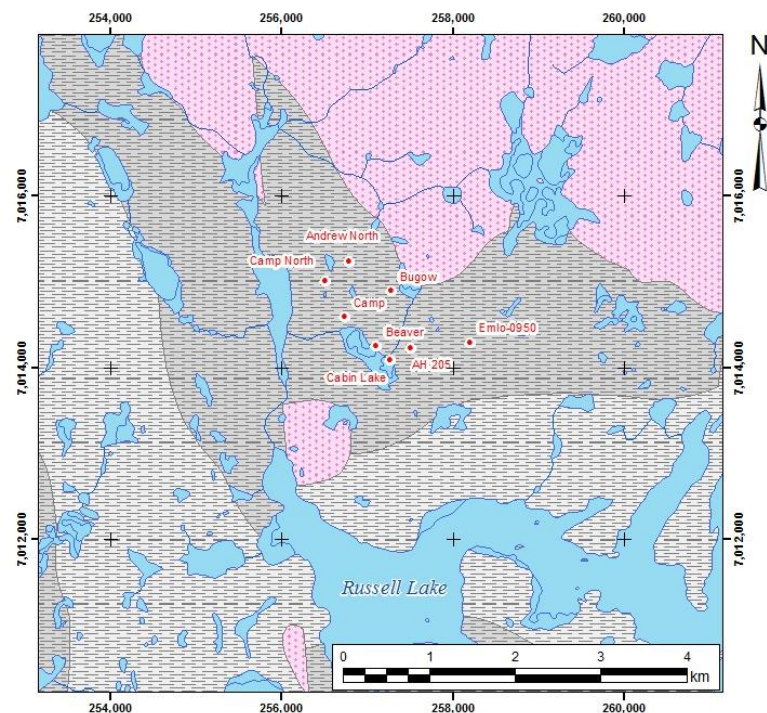
ECONOMIC GEOLOGY

The target area is underlain by metasedimentary rocks (turbidites) of the Yellowknife Supergroup. In contrast with the Burwash Formation near Yellowknife, the metasediments in the Russell Lake area host auriferous iron formation.

WHAT'S NEXT

- \$350,000 Exploration Program to upgrade to NI 43-101 inferred resource
- Mapping & Prospecting
- Aboriginal consultations

CABIN LAKE PROPERTY'S PROSPECTIVE TARGETS



- 1. Cabin Lake**
100,000 tons @ 0.3 oz/t historic resource and open along strike & depth
- 2. Bugow**
43,000 tonnes @ 4.46g/t open along strike & depth
- 3. Andrew**
5 DDH outlined mineralized zone 400x8.7 x 100 ft to date
- 4. Beaver**
Best grab sample @ 1.0 oz/ton
- 5. Camp**
100m strike x 2.74m wide, up to 8.91 g/t, open to depth
- 6. Camp North**
Channel sampling returned 0.22 oz/ton Au over 300 feet and 6.9ft wide, open to depth

COMPARABLES

www.terraxminerals.com
www.goldmining.com
www.nighthawkgold.com

CONTACT

Judson Culter
judson@culter.ca
rovermetals.com

* Non NI 43-101 compliant resources. Published by Aber Resources' in their 1987 Annual Report and ERM Minerals Bulletin respectively